

Marshalls
Brand names for less. Every day.

The Shoppes at Northway



Location

The Shoppes at Northway are located on McKnight Rd. in the heart of the retail activity in Pittsburgh's North Hills.

McKnight Road is a main North-South traffic artery of Pittsburgh (44,000 adt), and contains the majority of retail in the area. Nordstrom's, Macy's, JC Penney, LL Bean, Target and Kohl's are only a few of the national retailers located on McKnight Road in close proximity to the Shoppes at Northway.

The center enjoys excellent visibility and access from the heavily traveled roads that surround it, and it is positioned perfectly to benefit from the nearby densely populated North Hills communities.

Demographics

(5 mile ring) Population: 148,189
Households: 61,331
Median Age: 43.9 years
Avg. HH Income: \$79,663
Number of Employees: 52,213

More than 63% of the households in Ross Township's primary trade area earn more than \$50,000 per year.

Description

Multi-Level strip / mall shopping center.
Total GLA of 343,677 sf.



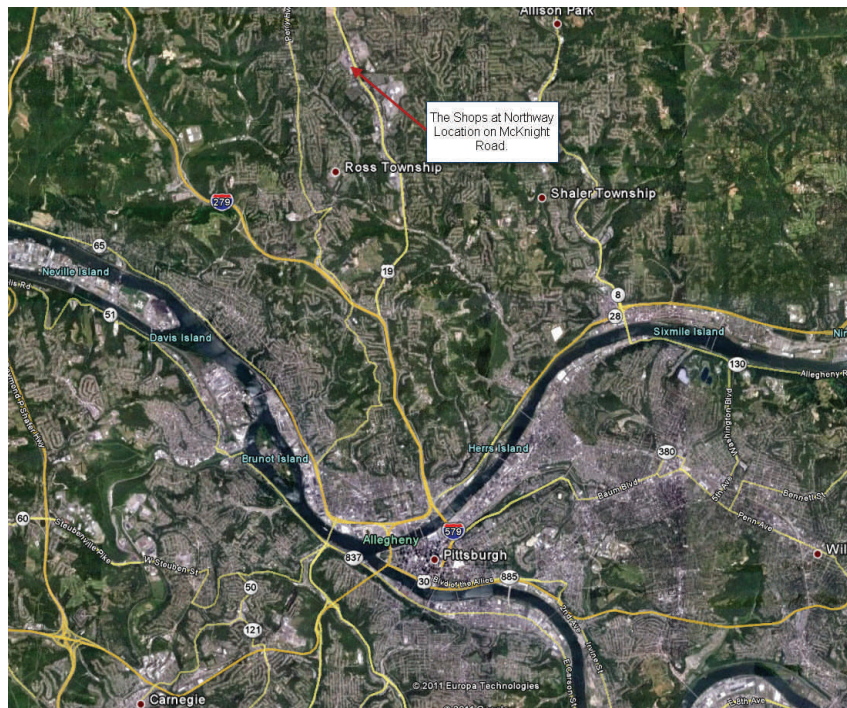
Zamias Services Inc

Christopher Zamias

300 Market Street
Johnstown, Pa 15905
Phone: 814-532-6172
Cell: 814-341-9724
Email:
Czamias@zamias.net



Please visit our website for additional information:
www.zamias.com



Major Tenants

Marshall's:	35,500 sf
Dick's:	69,639 sf
PetSmart:	20,041 sf
Aldi Grocery:	17,298 sf
Border's Books:	30,036 sf

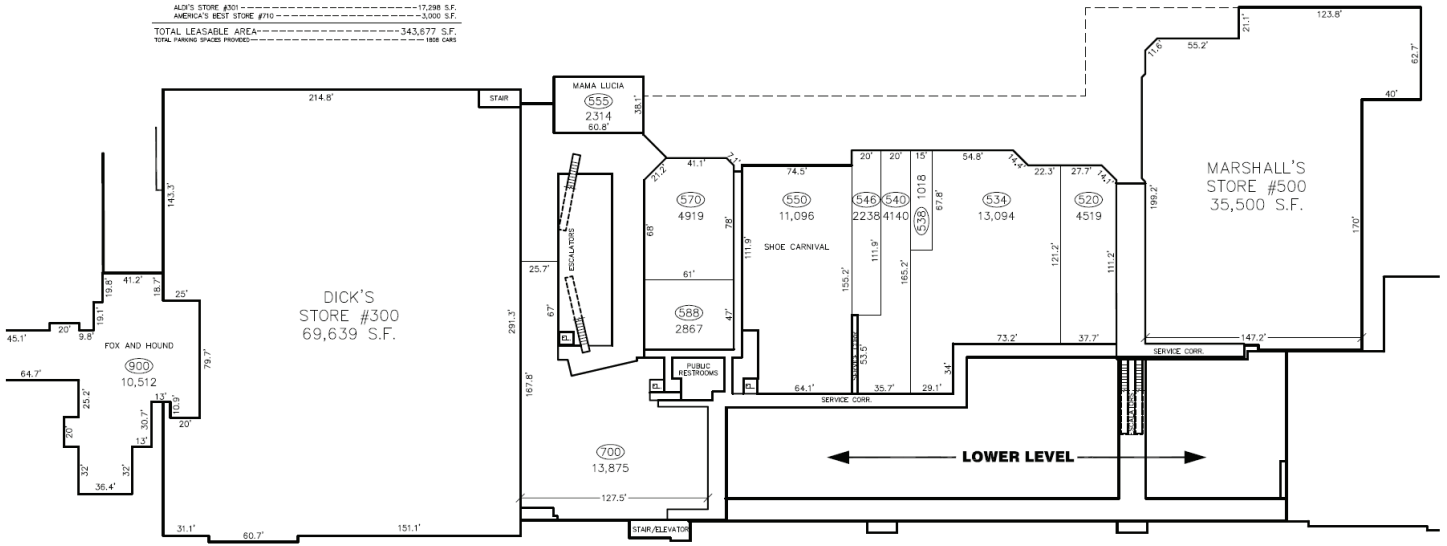
DEVELOPMENT DATA

ANCHOR STORES	
STORE #100	73,500 S.F.
BORDERS STORE #190	30,036 S.F.
DICK'S STORE #300	69,639 S.F.
MARSHALL'S STORE #500	35,500 S.F.
TOTAL ANCHOR STORES	208,675 S.F.
SMALL SHOP LEASABLE AREA	114,704 S.F.
FREE-STANDING	
ALDI'S STORE #201	17,288 S.F.
AMERICA'S BEST STORE #710	3,000 S.F.
TOTAL LEASABLE AREA	343,677 S.F.
TOTAL PARKING SPACES PROVIDED	1808 CARS

ROOM KEY

⊙ - UNIT NUMBER
0000 - UNIT SQUARE FOOTAGE

NOTE: ALL OF THE TENANT NAMES WHICH ARE INDICATED ON THIS PLAN REPRESENT THOSE LEASES WHICH ARE EXECUTED, OUT FOR SIGNATURE, IN NEGOTIATION, OR PROPOSED. ALL TENANTS SPECIFIED MAY NOT ACTUALLY COME INTO EXISTENCE. ALL SQUARE FOOTAGES AND DIMENSIONS ARE APPROXIMATE AND SUBJECT TO FIELD VERIFICATION.



UPPER LEVEL LEASE PLAN
NORTHWAY MALL
ROSS TOWNSHIP, PENNSYLVANIA
ALLEGHENY COUNTY

0 10 20 30 40 50 100 FEET
SCALE

DATE: 02/08/11

LP-2

MANAGED BY
ZAMIAS SERVICES INC



300 MARKET STREET
JOHNSTOWN, PA 15901
TELE: (814)535-3563

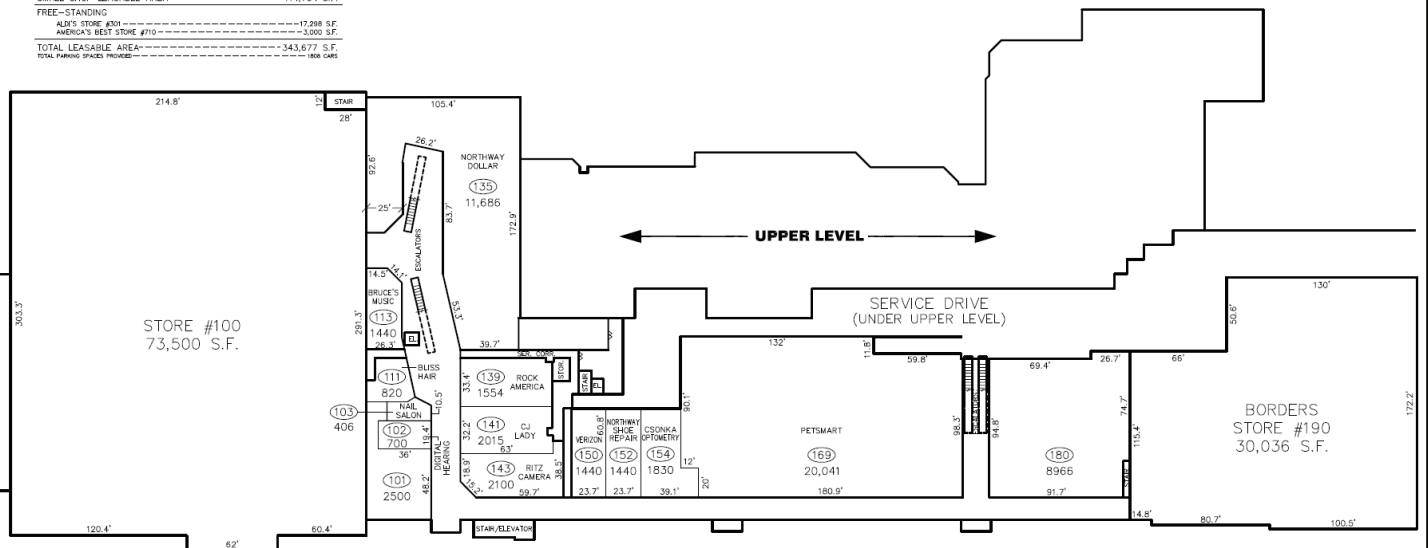
DEVELOPMENT DATA

ANCHOR STORES	
STORE #100	73,500 S.F.
BORDERS STORE #190	30,036 S.F.
DICK'S STORE #300	69,639 S.F.
MARSHALL'S STORE #500	35,500 S.F.
TOTAL ANCHOR STORES	208,675 S.F.
SMALL SHOP LEASABLE AREA	114,704 S.F.
FREE-STANDING	
ALDI'S STORE #201	17,288 S.F.
AMERICA'S BEST STORE #710	3,000 S.F.
TOTAL LEASABLE AREA	343,677 S.F.
TOTAL PARKING SPACES PROVIDED	1808 CARS

ROOM KEY

⊙ - UNIT NUMBER
0000 - UNIT SQUARE FOOTAGE

NOTE: ALL OF THE TENANT NAMES WHICH ARE INDICATED ON THIS PLAN REPRESENT THOSE LEASES WHICH ARE EXECUTED, OUT FOR SIGNATURE, IN NEGOTIATION, OR PROPOSED. ALL TENANTS SPECIFIED MAY NOT ACTUALLY COME INTO EXISTENCE. ALL SQUARE FOOTAGES AND DIMENSIONS ARE APPROXIMATE AND SUBJECT TO FIELD VERIFICATION.



LOWER LEVEL LEASE PLAN
NORTHWAY MALL
ROSS TOWNSHIP, PENNSYLVANIA
ALLEGHENY COUNTY

0 10 20 30 40 50 100 FEET
SCALE

DATE: 02/08/11

LP-1

MANAGED BY
ZAMIAS SERVICES INC



300 MARKET STREET
JOHNSTOWN, PA 15901
TELE: (814)535-3563